

Model : PSR-08
Description : 8-Step Sequence Relay Through Contacts

Supply : L-N (Normally 240 VAC)
Inputs : CS-S1 (Use volt-free contacts to close)
Outputs : CT-T1, CT-T2, CT-T3, CT-T4 , CT-T5 , CT-T6 , CT-T7 , CT-T8
(Volt-free contacts rated at 5A 240VAC)

Utilization:

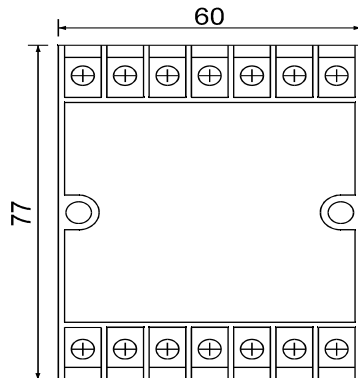
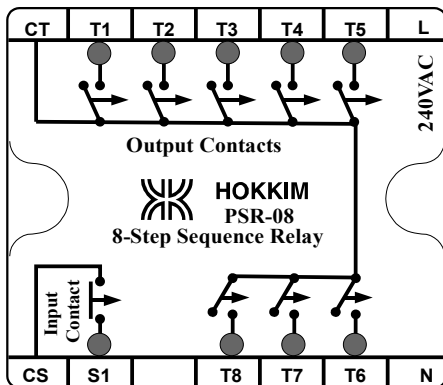
Upon power on with CS-S1 opened, output CT-T1 will close and outputs CT-T2, CT-T3, CT-T4, CT-T5, CT-T6, CT-T7 & CT-T8 will be opened. When CS-S1 is closed, CT-T1 will remain close. When CS-S1 is opened, CT-T1 will open and CT-T2 will close. When CS-S1 is closed again, CT-T2 will remain close. Change occurs at the outputs when CS-S1 re-opens.

Each time CS-S1 closed and re-open, the currently closed output will open and the next output in the sequence will close. Only one output will be closed at anytime. The order in which the output closes with each opening of the input CS-S1 is: T1-T2-T3-T4-T5-T6-T7-T8-T1-T2-T3-T4-T5-T6-T7-T8-T1-T2...

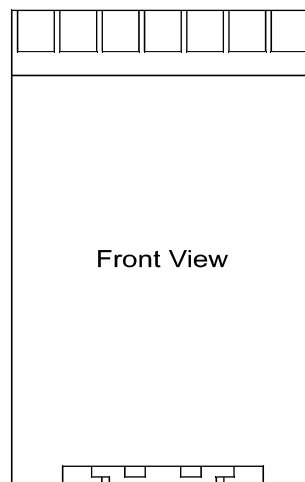
Technical Data

Supply Voltage	: □240VAC	□115VAC
	□24VDC	□12VDC
Frequency	: 50/60Hz for AC Supply	
Consumption	: 2VA	
Relay Response Time	: 100 msec.	
CS-S1 Contact Response Time	: 500 msec.	
Voltage between CS-S1	: 12 VDC	
Indication	: Green LED (CS-S1) Red LED (CT-Tn)	
Output Contacts	: 5A 240V 50Hz AC1	

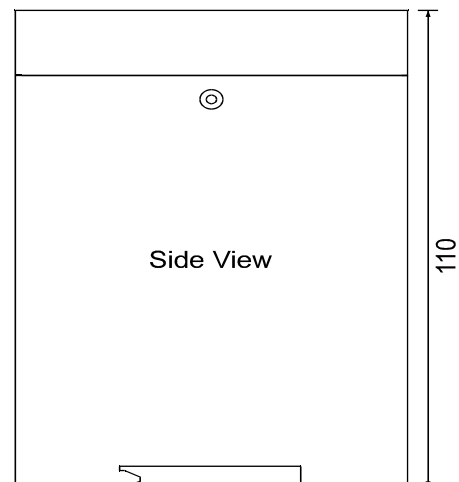
Relay ON	CT-T1 Close
	CT-T2 Close
	CT-T3 Close
	CT-T4 Close
	CT-T5 Close
	CT-T6 Close
	CT-T7 Close
	CT-T8 Close
Relay OFF	CT-T1 Open
	CT-T2 Open
	CT-T3 Open
	CT-T4 Open
	CT-T5 Open
	CT-T6 Open
	CT-T7 Open
	CT-T8 Open



Top View
Dimensions in mm



Front View



Side View